

Montgomery Ward®

Montgomery Ward®

Use it when you
need it, stow it
away when you
don't.

Portable Dishwasher



MODEL: WQP8-9239L-US

Montgomery Ward Customer Service
1112 7th Avenue, Monroe, WI 53566
8:00 am to Midnight, Monday through Friday

Wards.com 1-888-557-3848

Outside Back Cover

Instruction Manual

Item No.: 53534
120V~, 60Hz, 1100W

Wards.com 1-888-557-3848

Outside Front Cover



Thank you for purchasing your Portable Dishwasher by Montgomery Ward®. We guarantee that it will perform to the highest standard, time after time, with all the convenience, easy cleanup and durability you rely on from Wards.

Your new Portable Dishwasher eliminates the need for permanent installation and plumbing—just quickly connect it to your faucet. You will love the convenience of this appliance!

Table of Contents

Important Safeguards.....	3-4
3-Prong Plug.....	4
Parts & Features.....	5
About Your Dishwasher.....	6-7
Loading Your Dishwasher	8-9
How to Use	9-11
Cleaning and Care.....	12-13
Troubleshooting.....	14-15
Warranty & Return Information.....	16-17



3102543
Conforms to UL Std. 471
Certified to CSA Std. C22.2 No. 120-13

PLEASE SAVE THESE INSTRUCTIONS

THIS APPLIANCE IS FOR INDOOR USE ONLY

© 2015 Montgomery Ward, Inc. All rights reserved.

Important Safeguards

PLEASE READ THESE INSTRUCTIONS BEFORE USE

Basic safety precautions should always be followed when using this appliance.

WARNING: Before discarding this appliance, remove the door and leave racks in place to avoid child entrapment.

WARNING: TO AVOID THE RISK OF ELECTRICAL SHOCK, ALWAYS MAKE SURE THE PRODUCT IS UNPLUGGED FROM THE ELECTRICAL OUTLET BEFORE ASSEMBLING, DISASSEMBLING OR RELOCATING. DO NOT TRY TO SERVICE THIS PRODUCT YOURSELF.

Caution: Do not touch the heating element during or immediately following use or else personal injury can occur.

1. After unpacking, dispose of all packing materials in accordance with local ordinances.
2. To protect against electrical shock, do not place cord, plug or appliance in water or other liquid.
3. Unplug from outlet when not in use and before moving. Always unplug using the plug and not by pulling on the cord.
4. Never connect or disconnect plug with wet hands.
5. Do not operate any appliance with a damaged cord or plug, or after the appliance malfunctions or has been damaged in any manner. Call our toll-free customer service number for information regarding returning or replacing the product.
6. Do not allow unit to rest on power cord when in use or stored away.
7. Do not excessively bend or flatten power cord when in use or stored away.
8. Never carry, push or pull the appliance by the door or power cord.
9. Close supervision is necessary when any appliance is used by or near children. Do not allow children to climb inside of appliance.
10. Do not sit or stand on the door or dish racks—the unit could tip forward, causing personal injury and property damage.
11. Do not leave the door open when unattended in order to avoid a tripping hazard.
12. Do not wash plastic items unless they are marked “dishwasher safe” or the equivalent. If not marked as such, follow the manufacturer’s recommendation.
13. Load dishwasher so that plastic items do NOT come in contact with the heating element.

Important Safeguards (cont'd)

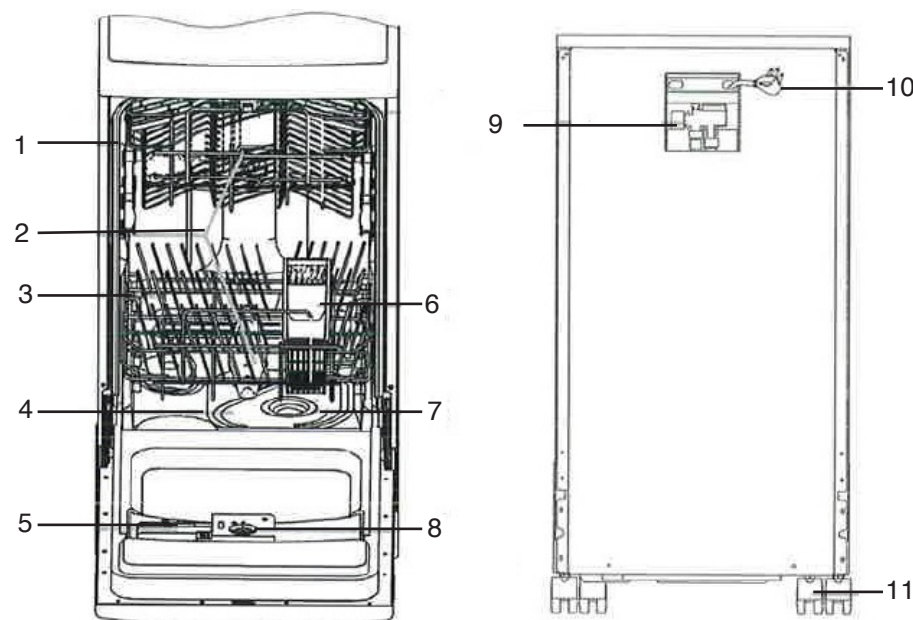
14. Use only detergent and rinse additives approved for use in a dishwasher. NEVER use soap, laundry detergent, or body wash.
15. Dishwashing detergents are strongly alkaline and pose a dangerous threat if swallowed. Avoid contact with skin and eyes and keep out of reach of children.
16. Do not move or tilt while in operation.
17. To avoid personal injury or potential flooding, keep the door closed during operation.
18. When loading items to be washed:
 - Position sharp items so that they will not come in contact with the door seal.
 - Load knives handle up in order to avoid injury.
19. Do not use appliance for anything other than its intended use.

3-Prong Plug

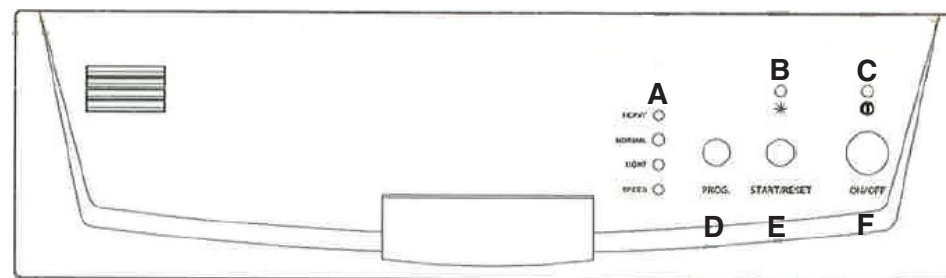
This appliance has a 3-prong (grounding) plug for use in a 3-prong (grounding) outlet to minimize the possibility of electric shock. This appliance should only be used with a 120V, 60Hz grounded outlet. Failure to follow these instructions could result in fire, electrical shock, serious injury or death.

If the plug does not fit fully in the outlet, contact a qualified electrician to install a 3-prong (grounding) outlet. Do not attempt to modify the plug in any way. Do not use an adapter or an extension cord. Failure to follow these instructions could result in fire, electrical shock, serious injury or death.

Parts & Features



1 - Upper Basket	7 - Coarse Filter
2 - Spray Arms	8 - Rinse-Aid Dispenser
3 - Lower Basket	9 - Portable Faucet Adapter Assembly
4 - Main Filter	10 - Power Cord
5 - Detergent Dispenser	11 - Casters
6 - Flatware Basket	



A - Wash Cycle Indicator	D - Wash Cycle Selection Button
B - Rinse-Aid Warning Light	E - Start / Pause Button
C - Power Indicator Light	F - ON / OFF Button

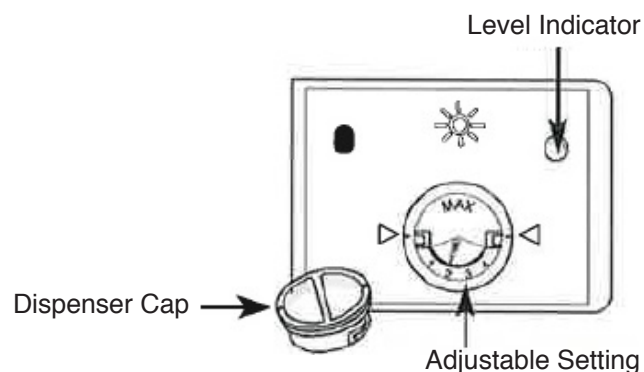
About Your Dishwasher

Rinse-Aid

Your dishwasher is designed to use liquid rinse-aids. If you have soft water, however, the use of a rinse-aid may not be needed. If a white film develops on your dishes, discontinue using a rinse-aid.

The rinse-aid is released during the final rinse to prevent water from forming droplets on your dishes which can leave spots and streaks. It also improves drying by allowing water to "sheet" off the dishes.

Only use rinse-aids branded for use with a dishwasher. NEVER fill the rinse-aid dispenser with any other substances (e.g. dishwasher cleaning agents or liquid detergents). This will damage the appliance.



The rinse-aid dispenser is located inside the door next to the detergent dispenser. To fill the dispenser:

1. Open the cap by turning to the "open" (left) arrow and lift out.
2. Pour rinse-aid into the dispenser until the level indicator turns completely black.

The volume of the rinse-aid dispenser is 3 fl. oz. Be careful not to overfill the dispenser because this can cause over sudsing.

3. Replace the cap by inserting it aligned with the "open" (left) arrow and turning to the "closed" (right) arrow.

NOTE: The rinse-aid warning light on the control panel will illuminate when the dispenser needs to be refilled.

About Your Dishwasher (cont'd)



Adjustable Setting

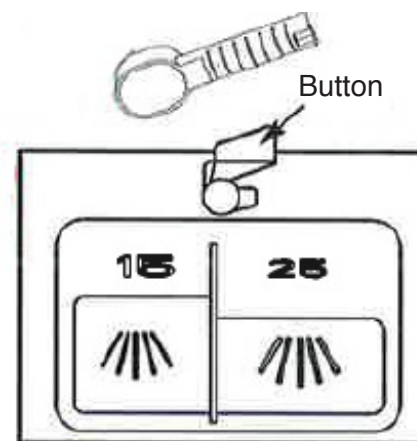
A measured amount of rinse-aid is dispensed during washing. The rinse-aid dispenser has 4 settings. Always start with the dispenser set on '2'.

If spots and poor drying occur, increase the amount of rinse-aid dispensed by removing the dispenser lid and rotating the dial to '3'. If the dishes are still not drying properly or are spotted, adjust the dial to '4.'

Detergent

WARNING: Dishwasher detergent is corrosive. Avoid contact with skin and eyes and keep out of reach of children. Failure to follow this warning can result in personal injury or death.

Your dishwasher has a specially designed water softener to help you use less detergent and rinse-aid. Generally, only a little more than half an ounce of detergent is needed. If dishes are heavily soiled you can add more detergent.



Filling the Detergent Dispenser:

Press the button to release the cover on the detergent dispenser. Fill detergent dispenser with powder *only* when you are ready to run the machine.

15 - Fill with main wash cycle detergent.

25 - Fill with pre-wash cycle detergent.

Observe the manufacturer's usage and storage recommendations, as stated on the detergent packaging.

Loading Your Dishwasher

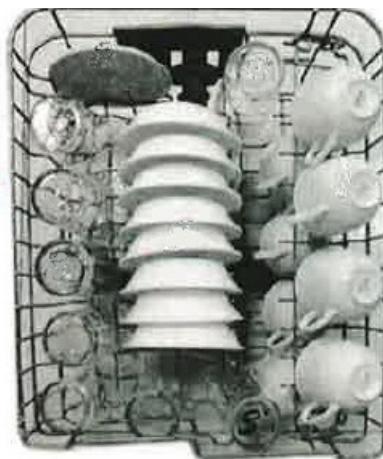
Upper Rack

The upper rack is designed to hold lighter or more delicate dishware, such as:

- Glasses
- Coffee and Tea Cups
- Saucers
- Shallow, lightly soiled pans
- Small Plates
- Bowls
- Dishware marked "Top Rack Only"

Placement of the upper rack can be adjusted higher or lower depending on which set of wheels are placed in the track.

NOTE: Cups and glasses should be positioned top down so that water does not collect in them.



Example of top rack loading

Lower Rack

The lower rack is for heavily soiled and larger dishware, such as:

- Plates up to 10½" in diameter
- Pots
- Pans
- Serving Bowls
- Flatware Basket

NOTE: Pots, pans and serving bowls should be positioned top down.

Guidelines:

- Scrape off large amounts of leftover food. It is not necessary to rinse dishes before putting in dishwasher.
- Dishes should NOT lie inside or cover one another.
- Always load sharp utensils with the sharp point down.
- Do not allow flatware to nest inside of each other.
- Position sharp items so that they will not come in contact with the door seal.
- For best energy efficiency, do not overload the dishwasher.

WARNING: Do not allow any item to extend through the bottom rack. Failure to follow this warning can result in damage to the appliance.

Loading Your Dishwasher (cont'd)

Dishes that you should not put in your dishwasher:

Not Suitable	Limited Suitability
Flatware with wood, horn china, or mother-of-pearl handles.	Some types of glasses can become dull after a large number of washes.
Plastics not rated dishwasher safe.	Silver and aluminum parts have a tendency to discolor during washing.
Older cutlery with glued parts that are not heat-resistant.	Decals and hand-painted patterns may fade if washed in the dishwasher frequently.
Bonded cutlery items or dishes.	
Pewter or copper items.	
Crystal glass.	
Steel items subject to rusting.	
Wooden platters.	
Items made from synthetic fibers.	

How to Use

There are two available adapters for connecting the dishwasher's waterline to the sink faucet. If the quick-disconnect adapter (A) does not fit the faucet, use the shorter adapter (B) following these instructions:

1. Remove the aerator from your faucet, using a wrench if necessary.
2. Remove any old washers from inside the spout and clean the threads of the faucet for ease of adapter installation.
3. Attach adapter (B) to your faucet.

NOTE: For faucets with outside threads, remove the thicker washer; for faucets with inside threads, leave the thicker washer in place.

4. Attach adapter (A) to adapter (B) and connect the water inlet hose to adapter (A).
5. Turn on faucet. If there is leaking, tighten the adapters.

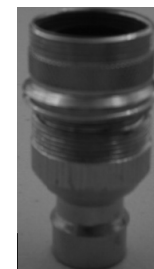
Adapter (A)



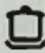



Adapter (B)



Adapters (B) & (A) Connected



Wash Cycles

Wash Cycle	Cycle Selection Information	Cycle Description	Detergent Amount Pre/Main	Run Time (minutes)	Water Usage (gal)
 Heavy	For the heaviest soiled loads, such as pots and pans, casserole dishes and dishes with dried on food.	Pre-wash Pre-wash (122° F) Wash (127° F) Rinse Rinse (143° F) Dry	0.6 oz	125	4.41
 Normal	For normally soiled loads, such as pots, plates, glasses, and lightly soiled pans. Normal daily operation.	Pre-wash Wash (123° F) Rinse Rinse (152° F) Dry	0.6 oz.	95	3.54
 Light	For lightly soiled loads, such as plates, glasses, bowls and lightly soiled pans.	Pre-wash Wash (122° F) Rinse Rinse (131° F) Dry	0.6 oz.	85	3.54
 Speed	A shorter wash for lightly soiled items that don't need drying.	Pre-wash Wash (122° F) Rinse (131° F) Dry	0.5 oz.	65	2.7

Starting a Wash Cycle

1. Load the dishwasher per the recommendations on page 8.
2. Add detergent and rinse-aid as described on pages 6 and 7.
3. Plug in the dishwasher.
4. Connect the waterline to the adapter on the sink faucet.
5. Turn the hot water to full pressure.
6. Make sure the door is closed tightly.
7. Press the ON / OFF button.
8. Press the Wash Cycle button until your desired wash cycle is selected.
9. Press the Start / Pause button.

Changing a Wash Cycle

Operation will stop if the door is opened during a wash cycle. Operation will continue ten seconds after the door is closed.

WARNING: Opening the door during a wash cycle could allow scalding water and steam to escape from the machine, causing personal injury or property damage.

You can modify the wash cycle if the dishwasher has only run for a short time. Otherwise, the detergent may have already been released and the appliance may have already drained the wash water. If this is the case, the detergent dispenser must be refilled.

1. Press the Start / Pause button.
2. Press and hold the Wash Cycle button for three seconds to cancel the current wash cycle.
3. Press the Wash Cycle button until your desired wash cycle is selected.
4. Press the Start / Pause button.

Pausing a Wash Cycle

A forgotten dish can be added any time before the detergent cup opens.

WARNING: Opening the door during a wash cycle could allow scalding water and steam to escape from the machine, causing personal injury or property damage.

1. Press the Start / Pause button.
2. When the spray arms come to a rest, open the door.
3. Add forgotten dishes to dishwasher.
4. Close the door and press the Start / Pause button. Normal operation will resume after three seconds.

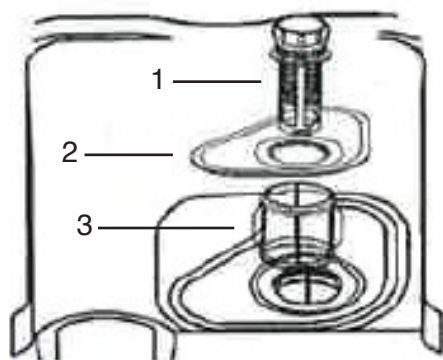
At the End of the Wash Cycle

When the wash cycle has finished, the dishwasher's buzzer will sound for eight seconds, then stop.

1. Turn off the appliance using the ON / OFF button.
2. Shut off the water supply.
3. Open the door a little ways and leave ajar for 15 minutes.
4. Allow dishes to cool before unloading to avoid handling hot dishes and utensils, which are more susceptible to breakage.

Filtration System

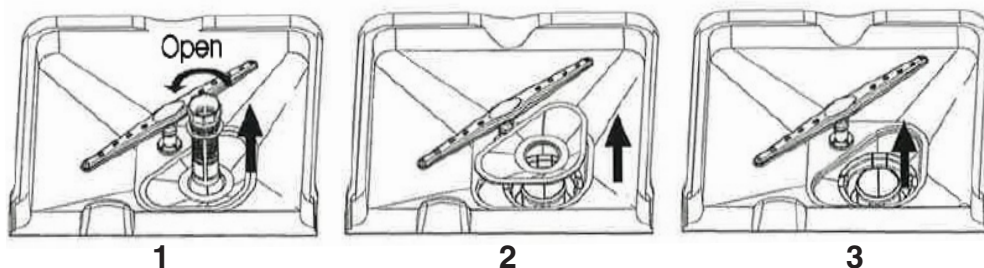
The filters prevent larger remnants of food or other objects from getting inside the pump. The filtration system consists of a coarse filter, a main filter and a fine filter.



- (1) **Coarse filter:** Larger items (pieces of glass or bone) that could block the drain are trapped in this filter.
- (2) **Main filter:** Food and soil particles trapped by this filter are pulverized by a special jet on the spray arm and washed down the drain.
- (3) **Fine filter:** This filter holds soil and food residue in the sump area and prevents it from being redeposited on the dishes during the wash cycle.

Removing and Cleaning the Filters

For best performance and results, the filter assembly must be cleaned regularly.



1. Turn the Coarse filter counter-clockwise and lift out.
 - To remove the trapped items, gently squeeze the tabs on the top of this filter and lift out.
2. Lift up the Main filter.
3. Lift up the Fine filter.
4. Remove any food remnants and clean the filters under running water.

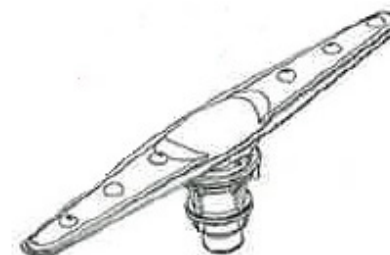
Reassemble filters by reversing the order of the steps above.

WARNING: Never run the dishwasher without the filters in place. Failure to follow this warning will result in damage to the appliance.

Cleaning the Dishwasher

Spray Arm

It is necessary to clean the Spray Arm on a regular basis to prevent obstructions in the spray jets, which would decrease the efficiency.



To remove the spray arm, lift straight up. Wash in warm, soapy water and clean spray jets with a soft bristle brush.

Control Panel and Exterior

The control panel can be cleaned by using a lightly dampened cloth and drying thoroughly. To clean the exterior, use appliance polishing wax.

NEVER use sharp objects, scouring pads or harsh cleaners on any part of the dishwasher. Abrasive agents should be avoided so as not to scratch or damage the surface of the appliance.

Door Seal

One factor that causes odors to form in the dishwasher is food that remains trapped in the seal. Periodic cleaning will prevent this from occurring.

To clean the edge around the door, you should only use a soft, warm damp cloth. To avoid penetration of water into the door lock and electrical components, do NOT use a spray cleaner of any kind.

WARNING: NEVER use a spray cleaner to clean the door panel or seal as it may damage the door lock and electrical components.

Troubleshooting

Before calling for service, try these troubleshooting tips.

Problem	Possible Cause	Remedy
The Light and Speed Wash Cycle lights blink.	Malfunction of the temperature sensor or heating element.	Call Customer Service.
The Light and Normal Wash Cycle lights blink.	Malfunction of the temperature sensor or open circuit.	Confirm that the electrical plug is installed securely. If problem continues, call Customer Service.
The Light, Normal and Speed Wash Cycle lights blink.	Malfunction of the temperature sensor or short circuit.	Confirm that a circuit breaker has not been tripped or that a fuse has not blown. If problem continues, call Customer Service.
Dishwasher doesn't start.	Blown fuse or the circuit breaker has been tripped.	Replace fuse or reset circuit breaker. Remove any other appliances sharing the same circuit as the dishwasher.
	Power supply isn't turned on.	Make sure the power cord is properly plugged into the wall socket and that the unit has been powered ON.
	Door isn't properly closed.	Close the dishwasher, making sure the door latches.
Water not pumped from dishwasher.	Kink in drain hose.	Check the drain hose.
	Filter clogged.	Check the Coarse filter for obstructions.
	Kitchen sink clogged.	Check the kitchen sink to make sure it is draining well. If the problem is the kitchen sink, call a plumber.
Black or gray marks on dishes.	Aluminum utensils have rubbed against dishes.	Use a mild abrasive cleaner to eliminate those marks.

Troubleshooting (cont'd)

Problem	Possible Cause	Remedy
Suds in the tub.	Improper detergent.	Only use detergent specifically made for dishwashers to avoid suds. If suds occur, open the door and let the suds evaporate. Add 1 gal. of cold water to the tub. Close and latch the door, then start the "Soak" cycle to drain out the water. Repeat if necessary.
	Spilled rinse-aid.	Always wipe up rinse-aid spills immediately.
Stained tub interior.	Detergent with colorant was used.	Use detergent without added colorant.
White film on the inside surface.	Hard water minerals.	To clean the interior, use a damp sponge with dishwasher detergent and wear rubber gloves. Never use any other cleaner than dishwasher detergent for the risk of foaming or suds.
There are rust stains on cutlery.	The affected items are not corrosion-resistant.	Place only corrosion-resistant cutlery in the dishwasher.
Knocking noise during the wash cycle.	The spray arm is knocking against something.	Pause the cycle and rearrange the items to remove the obstruction.
Glassware is cloudy.	Combination of soft water and too much detergent.	Use less detergent if you have soft water and select a shorter cycle to wash the glassware.
Dishes aren't dry.	Rinse-aid dispenser is low or empty.	Check rinse-aid level.
	Low inlet water temperature.	Check that inlet water temperature is 120° F or above.
	Dishes removed too soon.	Allow dishes to stand for 15 minutes after wash cycle.

Returns

If any item, for any reason, does not meet your expectations, just return it to us. We'll gladly either:

- Refund your merchandise amount
- Credit your account
- Send a replacement

You can return any unused item in its original packaging within 60 days of its receipt for a full refund of the purchase price (excluding shipping and handling charges).

Please send returns to:

**Montgomery Ward, Inc.
Attn: Customer Returns
2000 Harrison Suite 100
Clinton, IA 52732-6676**

When returning an item:

- Use the original packaging and pack it securely.
- Please adequately insure your item in case you need to make a claim with the carrier you choose for returning your item.
- Include your order number and reason for return.
- We recommend keeping the receipt for 4 weeks.

Montgomery Ward®

Improving American Homes Since 1872



1 Year Limited Warranty

Montgomery Ward, Inc. warrants this product to be free from defects in material and workmanship for one year from provable date of purchase.

Within this warranty period, Montgomery Ward will repair or replace, at its option, defective parts of this product at no charge, provided the product is returned, freight prepaid with proof of purchase to Montgomery Ward. Allow 2-4 weeks for return shipping.

This warranty does not cover improper installation, misuse, abuse or neglect on part of the owner. Warranty is also invalid in any case that the product is taken apart or serviced by an unauthorized service station.

This warranty gives you specific legal rights and they may vary from state to state.

THE FOREGOING WARRANTIES ARE IN LIEU OF ALL OTHER WARRANTIES AND CONDITIONS, EXPRESS OR IMPLIED, INCLUDING BUT NOT LIMITED TO THOSE OF MERCHANTABILITY OR FITNESS FOR A PARTICULAR PURPOSE.

Montgomery Ward Customer Service
8:00 am to Midnight CST, Monday through Friday

Wards.com 1-888-557-3848