



PORTABLE COUNTERTOP DISHWASHER Instruction Manual

ITEM: 733851



Ginnys.com • 1.800.544.1590

Thank you for purchasing your Portable Countertop Dishwasher by Ginny's. This quality appliance gives you the luxury of a dishwasher in a portable, compact size for everyday use. You'll enjoy its many benefits for years to come, from saving time and energy to reduced kitchen clutter, and the easy control panel with multiple settings and digital display. And perhaps most of all, you'll savor the peace of mind that comes with a clean you just can't get from hand washing. Enjoy!

READ CAREFULLY BEFORE USING & SAVE THESE INSTRUCTIONS

1. Basic safety precautions should always be followed when using your Countertop Dishwasher, especially when children are present. This appliance is not intended for use by children.

WARNING: To avoid the risk of electrical shock, always make sure the product is unplugged from the electrical outlet before assembling, disassembling, relocating, servicing or cleaning.

2. Remove and safely discard all packaging material and labels before first use.

3. Do NOT place any heavy objects on the door, or press down, when it is open as the appliance could tip forward. The door should not be left open when it is not in use.

4. When loading this appliance, you should prevent plastic items from coming into contact with the interior walls.

5. Do NOT wash plastic items unless they are marked "dishwasher safe" or the equivalent.

6. When loading, prevent sharp items from damaging the door seal. Knives and other utensils with sharp points must be loaded in the cutlery basket with their points down.

7. Do NOT operate unless all enclosure panels are properly in place. Open the door very carefully as there is a risk of water squirting out.

8. Use only detergent and rinse aids designed for an automatic dishwasher. NEVER use laundry detergent or hand washing soap

in your dishwasher. Keep these products out of the reach of children.

9. If the appliance or power cord is damaged or malfunctions, call the Ginny's toll-free number for replacement or return: 800-533-1590.

10. Use this dishwasher only for its intended purpose.

11. DO NOT use this appliance outside.

TABLE OF CONTENTS

Important Safeguards	3
Specifications	4
Part Names	5-6
Installation	7-8
How to Operate	9-13
Cleaning & Care	13-15
Troubleshooting	16-19
Warranty	20

SAVE THESE INSTRUCTIONS

No user-serviceable parts inside. A short cord is provided to reduce the hazards resulting from entanglement or tripping over a long cord. The cord should not be allowed to drape over the counter or tabletop where it can be pulled on by children or tripped over.

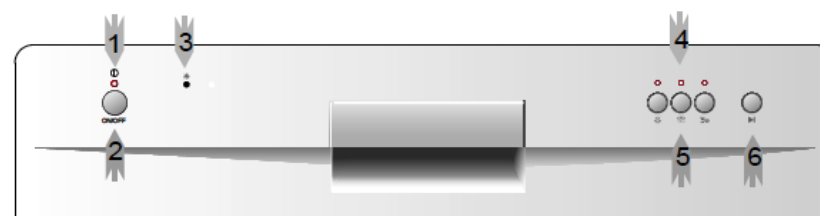
FOR HOUSEHOLD USE ONLY

SPECIFICATIONS

Model Number:	WQP6-3208-US
Cord Length:	72" (+/- 6")
Outside Dimensions:	21-1/2"L x 19-1/2"D x 17-1/4"H
Cavity Dimensions:	8.7"H x 13.4"W x 12.6"D
Power Consumption:	120V/60Hz 680W

PART NAMES

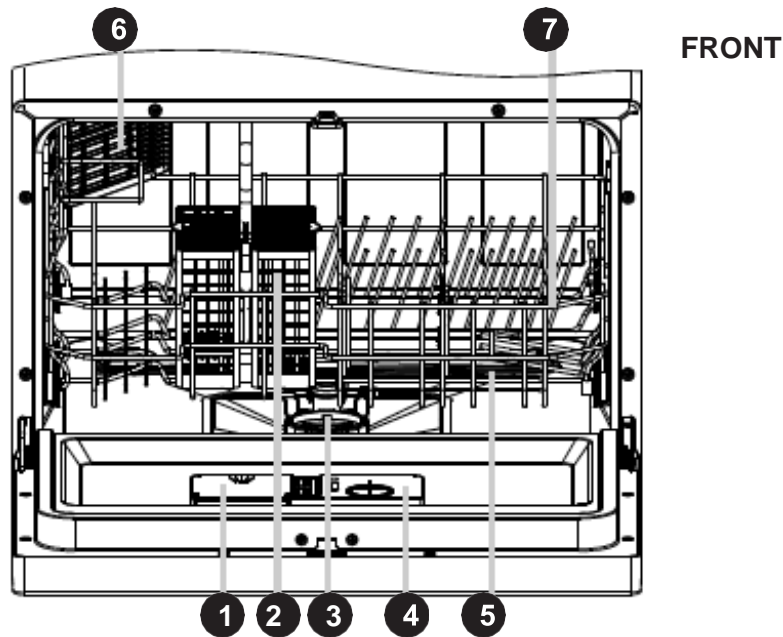
CONTROL PANEL



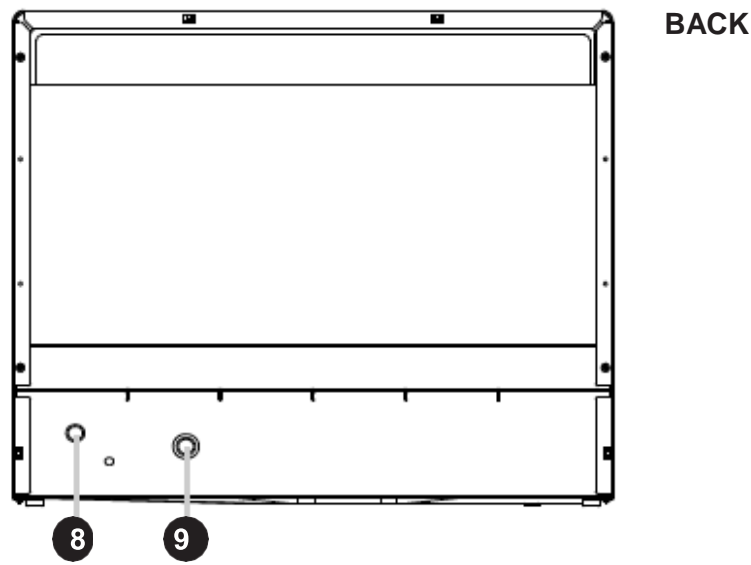
- 1. Power On Light:** To come on when Power ON/OFF button is pressed down.
- 2. ON/OFF Button:** To turn on/off the power supply.
- 3. Rinse Aid Warning Light:** To be on when the rinse aid dispenser needs to be refilled.
- 4. Program Indicator Light:** When you select washing program, the corresponding light will display.
- 5. Program Indicator Button:** When you press washing program button, the corresponding light will display.
- 6. Start/Reset Button:** Press this button to start or pause the dishwasher. The indicator light will be blinking when starting.

PART NAMES...cont.

INSTALLATION



FRONT

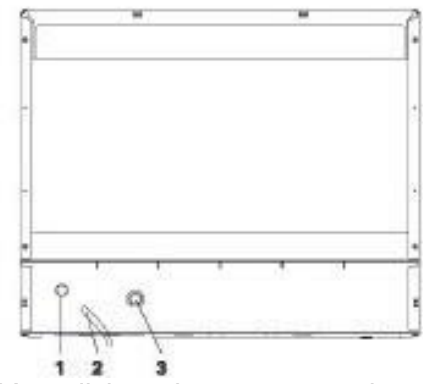


BACK

- 1. Detergent Dispenser
- 2. Cutlery Basket
- 3. Filter Assembly
- 4. Rinse Aid Dispenser/ Setting
- 5. Spray Arms
- 6. Cup Shelf
- 7. Basket
- 8. Drain Pipe Connector
- 9. Inlet Pipe Connector

POSITIONING THE APPLIANCE:

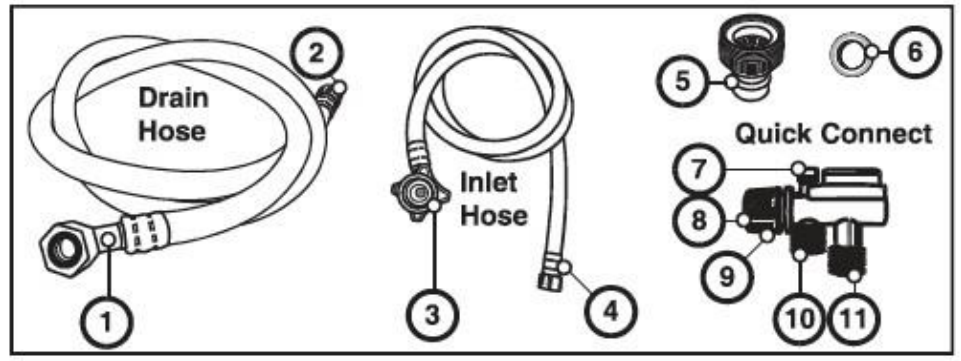
Position the appliance in the desired location. The back should not rest against the wall behind it. The dishwasher is equipped with water supply and drain hoses that can be positioned to the right or the left to facilitate proper installation.



Rear of Dishwasher:

- 1. Drain Port
- 2. Power Cord
- 3. Inlet Port

Your dishwasher comes equipped with a 'quick connect' assembly (includes inlet and drain hose). One of the faucet adapters (5) must be installed on the faucet before you can connect the dishwasher. The faucet adapters (5) are compatible with faucets either male (outside) or female (inside) threaded faucet connections. Make sure the gasket (6) is seated properly inside the faucet adapter (5).



- Quick Connect Assembly
- 1. Drain Port connection
- 2. Quick Connect connection
- 3. Inlet Port connection
- 4. Quick Connect connection
- 5. Faucet Adapters (internal or external thread)
- 6. Gasket
- 7. Pressure Relief Valve
- 8. Faucet Adapter connection
- 9. Locking Collar
- 10. Inlet Hose connection
- 11. Drain Hose connection

INSTALLATION...cont.

CONNECTING THE DISHWASHER: (Refer to diagrams on page 7)

1. Remove the aerator from the faucet. Thread the Faucet Adapter with gasket onto (or into) the faucet tap. If leaks occur, tighten with vice-grips, do not over-tighten. Use thread tape if needed.
2. Connect the 6-sided connection of the drain hose (1) to the drain port connection (1) on the back of the dishwasher cabinet. Do NOT over-tighten (to avoid damage to the thread).
3. Connect the star-shaped connection of the inlet hose (3) to the inlet port (3) on the back of the dishwasher cabinet. Do NOT over-tighten (to avoid damage to the thread).
4. Connect the circular connection of the drain hose onto the longer (bottom) male connection on the quick connect (11).
5. Connect the circular connection of the inlet hose onto the shorter (top) male connection on the quick connect (10).
6. Attach the quick connect onto the faucet adapter by pulling down the outer locking collar on the quick connect while pushing the quick connect upward onto the faucet adapter.
7. When the quick connect snaps onto the faucet adapter, release the locking collar. Verify that the connection is secure.
8. Slowly open the hot water line and check for any sign of water leaks at all hose connections. If leaks are located, immediately close the water supply and repair the hose connections.

IMPORTANT:

Once you open the water supply line (even if it is closed immediately thereafter), the inlet hose will be pressurized. To relieve water pressure from inside the inlet hose (make sure the water line (faucet) is off): press and hold the red pressure release button on the quick connect until the flow of water stops.

WARNING:

FAILURE TO RELIEVE WATER PRESSURE BEFORE DISCONNECTING THE QUICK CONNECT FROM THE FAUCET WILL RESULT IN BACK-PRESSURE OVER-SPRAY. THE TEMPERATURE OF INCOMING WATER CAN BE VERY HOT AND BACK-PRESSURE OVER-SPRAY COULD CAUSE SEVERE BURNS AND/OR SCALDING.

BEFORE FIRST USE

Check the following before starting the dishwasher:

1. The dishwasher is level and fixed properly.
2. The inlet valve is open.
3. The hose connections on the dishwasher and faucet need to be on tight to prevent leaking.
4. The inlet and drain hoses are not knotted.

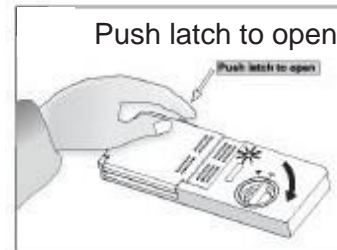
HOW TO OPERATE

Detergent and Rinse Aid Dispensers:

TIP: If Using Detergent Tablets:

Detergent tablets of different brands dissolve at different speeds. Some tablets cannot dissolve and develop their full cleaning power during short cycles. Please use long cycles when using detergent tablets.

1. **Detergent Dispenser:** The dispenser must be filled before the start of each wash cycle. This dishwasher uses less detergent than a conventional dishwasher. More heavily soiled items may need more detergent. Always add the detergent just before starting the dishwasher.



WARNING! Dishwasher detergent is corrosive. Take care to keep out of reach of children.

• Filling the Detergent Dispenser:

Push the latch to open. Fill with detergent. Close the lid and press until it locks in place. Please observe any manufacturer's warnings and storage recommendations as stated on the detergent packaging.

HOW TO OPERATE

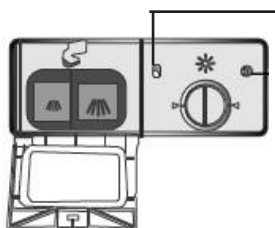
2. Rinse Aid Dispenser:

The rinse-aid is released during the final rinse to prevent water from forming droplets on your dishes that can leave spots and streaks. It also improves drying by allowing water to sheet off the dishes.



Adjust Lever

The rinse aid dispenser has 4 settings. Always start with the dispenser set on '1'. If spots and poor drying occur, increase the amount of rinse aid dispensed by removing the dispenser lid and rotating the dial to the next highest number.



Rinse-Aid Indicator

• Filling the Rinse Aid Dispenser:

Open the cap and pour rinse-aid into the dispenser until the level indicator turns completely black. This dishwasher uses less rinse aid than conventional dishwashers.

NOTE: NEVER fill the rinse aid dispenser with any other substances (e.g. dishwasher cleaning agent, liquid detergent). This will damage the appliance.

• Refilling the rinse aid dispenser:

You can judge the amount of rinse aid by the color of the rinse aid indicator located next to the cap. When the rinse aid container is full, the whole indicator will be dark. As the rinse aid diminishes, the size of the dark dot decreases.

HOW TO OPERATE...cont.

TIP: Dishes you shouldn't wash in the dishwasher:

NOT Suitable	Limited Suitability
Cutlery with wood, horn, china or mother of pearl handles	Some types of glasses can become dull after a large number of washes
Plastic items that are not heat-resistant	Silver and aluminum parts have a tendency to discolor during washing
Older cutlery with glued parts that are not heat-resistant	Decal and hand painted patterns may fade when washed in the dishwasher frequently
Bonded cutlery items or dishes	
Pewter or copper items	
Crystal	
Steel items subject to rusting	
Wooden platters	
Items made from synthetic fibers	

LOADING THE DISHWASHER:

For best performance, follow these loading guidelines.

1. Scrape off any large amounts of leftover food.
2. Load items such as cups, glasses, pots/pans, face down.
3. Curved items, or those with recesses, should be loaded at a slant so that water can run off.
4. All items should be placed so that the spray arms can rotate freely during washing.



NOTE: As everyone's dishes are different, try to use 10" diameter or smaller plates.

HOW TO OPERATE...cont.

5. Dishes and cutlery must not lie inside one another, or cover each other.
6. To avoid damage to glasses, they must not touch.
7. Cutlery should be in the cutlery basket with handles at the bottom.
8. Put long utensils in the horizontal position at the front of the upper basket.
9. Sharp items must be loaded in the cutlery basket with their points down.
10. Please do not overload your dishwasher. This is important for good results and reasonable energy consumption

STARTING A WASH CYCLE:

1. Add detergent and rinse aid per instructions on pages 9 & 10.
2. Load dishes per instructions on page 11.
3. Plug in your dishwasher.
4. Connect the quick-disconnect to the faucet adapter. Make sure the hot water supply is turned on to full pressure.
5. Close the door and press ON/OFF to turn on the power supply.
6. Select the wash cycle by pressing the Program Indicator Button.
 - Heavy (pots & pans)
 - Normal (dishes)
 - Speed wash (glassware)
7. Then press START/RESET to start the dishwasher.

Note: When you press START/RESET button to pause during washing, the LED display will stop blinking and the dishwasher will beep every minute unless you press START/RESET to start.

CHANGING THE CYCLE AFTER THE WASH CYCLE HAS STARTED:

You can modify the washing cycle only if the dishwasher is early in the wash cycle. Otherwise, the detergent may have already been released and the dishwasher may have already drained. If this is the case, the detergent dispenser must be refilled (see p. 9). Press "START/RESET" and hold for 3 seconds until the machine moves into standby mode. Then you can change the program to the desired cycle setting.

ADDING A DISH AFTER THE WASH CYCLE HAS STARTED:

A forgotten dish can be added any time before the detergent cup opens.

1. Press "START/RESET" to pause
2. Open the door partially to stop washing
3. After the spray arms stop, open the door completely
4. Add forgotten dish and close the door
5. Press "START/RESET" and the dishwasher will continue its cycle after 10 seconds

HOW TO OPERATE...cont.

AT THE END OF THE WASH CYCLE:

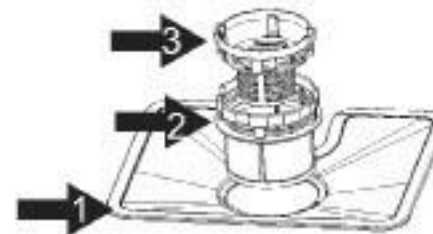
When the washing cycle has finished, the buzzer of the dishwasher will sound for 8 seconds, then stop.

1. Turn off the appliance using the ON/OFF button, shut off the water supply and open the door of the dishwasher.
2. Wait a few minutes before unloading the dishwasher to avoid handling the dishes and utensils while they are still hot and more susceptible to breakage. They will also dry better.
3. Unplug the dishwasher.

CLEANING AND CARE

Cleaning the Filter Assembly:

The filter prevents larger remnants of food or other objects from getting inside the pump. The filtering system consists of a coarse filter, a flat (main) filter and a fine filter.



1. Main filter
2. Fine filter
3. Coarse filter

TIP: For best performance and results, the filter assembly must be cleaned regularly. Remove the larger particles trapped in the filter after each wash cycle.

WARNING:

NEVER RUN THE DISHWASHER WITHOUT THE FILTERS IN PLACE. IMPROPER REPLACEMENT OF THE FILTERS MAY REDUCE THE PERFORMANCE LEVEL OF THE APPLIANCE AND DAMAGE DISHES AND UTENSILS.

By unscrewing the coarse filter, you can remove the filter system. Remove any food remnants and clean the filters under running water. Use a brush to gently clean the filters, if necessary.

CLEANING & CARE...cont.

Cleaning the dishwasher exterior:

The control panel exterior can be cleaned by using a lightly dampened cloth and drying thoroughly.

WARNING:

NEVER use a spray cleaner to clean the door panel as it may damage the door lock and electrical components.

Abrasive agents and some paper towels should not be used because of the risk of scratching or leaving spots on the surface.

NEVER use sharp objects, scouring pads or harsh cleaners on any part of the dishwasher.

Cleaning the Spray Arm:

The spray arm should be removed for periodic cleaning of the nozzles to prevent possible clogging. Wash it under running water and carefully replace it, checking that its rotary movement is in no way impeded.

Grasp the middle of the spray arm, pull it upwards to remove it. Wash the arm under a jet of running water and carefully replace it. After reassembly, check that the spray arm turns freely.

TIPS: Dishwasher Maintenance:

- After every wash: Leave the door slightly open so that moisture and odors are not trapped inside.
- Disconnect from the electrical outlet before performing cleaning or maintenance.
- When it is not in use for a long period of time: It is recommended that you run a wash cycle with the dishwasher empty.
- Moving the appliance: If the appliance must be moved, try to keep it in the vertical position.
- Seals: One of the factors that causes odors to form in the dishwasher is food that remains trapped in the seals. Periodic cleaning with a damp sponge will prevent this from occurring.

CLEANING & CARE...cont.

NOTE:

Hard water conditions will adversely affect the washing performance of your dishwasher.

Hard water conditions will also contribute to 'lime' (white film substance) deposits and/or 'scaling' on the surface of the dishwasher tub and heating element (located in the sump underneath the removable filter screen).

To assist in minimizing these conditions, it is recommended to periodically operate/rinse the inside of the dishwasher (empty) using 1 cup of white vinegar at least once a week.

TROUBLESHOOTING

Problem	Possible Causes	What to do
Dishwasher doesn't start	Blown fuse or the circuit breaker has tripped	Replace fuse or reset breaker. Remove any other appliances on the same circuit
	Power supply isn't turned on	Make sure the dishwasher is turned on and the door is closed securely. Make sure the power cord is properly plugged into the outlet
	Door isn't properly closed	Close the dishwasher, making sure the door latches
Water not pumped from dishwasher	Kink in drain hose	Check the drain hose
	Filter clogged	Check the coarse filter: page 13
Suds in the tub	Improper detergent	Only use detergent specifically made for dishwasher. If suds occur, open the door and let suds evaporate. Add 1 gal. of cold water to the tub. Close and latch the door, then start the SOAK cycle to drain out the water
	Spilled rinse-aid	Always wipe up spills immediately
Stained tub interior	Detergent with colorant was used	Make sure detergent has no colorant

TROUBLESHOOTING...cont.

Problem	Possible Causes	What to do
White film on the interior	Hard water minerals	See Cleaning & Care
There are rust stains on cutlery	The affected items are not corrosion-resistant	Place only corrosion-resistant cutlery in the dishwasher
Knocking noise	The spray arm is knocking against an item in a basket	Interrupt the cycle and rearrange the items
Cloudiness on glassware	Combination of soft water and too much detergent	Use less detergent if you have soft water and select a shorter cycle
Black or gray marks on dishes	Aluminum utensils have rubbed against the dishes	Use a mild abrasive cleaner to eliminate marks
Detergent left in dispenser cups	Dishes block detergent cups	Reload the dishwasher. See page 11.

TROUBLESHOOTING

Problem	Possible Causes	What to do
Dishes are not clean	Dishes not loaded correctly	See Loading Dishwasher: page 11
	Cycle not powerful enough	Select a more intensive cycle
	Not enough detergent dispensed	Use more detergent or change detergent
	Items are blocking path of spray arm	Rearrange items so arm can rotate freely
	Filter not clean or incorrectly assembled	Clean & fit filter combination. Clean spray arm: page 14
Dishes are not drying	Improper loading	Load dishwasher: page 11
	Too little rinse aid	Increase amount or refill rinse aid
	Dishes are removed too soon	Open dishwasher door, leave ajar for few minutes
	Wrong cycle selection	In short cycles, wash temperature is lower. Choose program with longer cleaning cycle

TROUBLESHOOTING...cont.

Error Codes:

When there are certain malfunctions within the dishwasher, the display will show error codes to warn you:

Code	Meaning	Possible Causes
E1	Longer inlet time	Faucet is not opened or water intake is restricted or water pressure is too low.
E4	Overflow	Some element of the dishwasher has a leak.

WARRANTY

Ginny's warrants this product free from defects in material and workmanship for one year from provable date of purchase.

Within this warranty period, Ginny's will repair or replace, at its option, defective parts at no charge, provided the product is returned, freight prepaid with proof of purchase to Ginny's.

Allow 2-4 weeks for return shipping.

This warranty does not cover improper installation, misuse, abuse or neglect on part of the owner.

Warranty is also invalid in any case that the product is taken apart or serviced by an unauthorized service station.

This warranty gives you specific legal rights and they may vary from state to state.

THE FOREGOING WARRANTIES ARE IN LIEU
OF ALL OTHER WARRANTIES AND CONDITIONS,
EXPRESS OR IMPLIED,
INCLUDING BUT NOT LIMITED TO THOSE OF
MERCHANTABILITY OR FITNESS
FOR A PARTICULAR PURPOSE.



Customer Service
Phone: 1-800-544-1590
8:00 am to Midnight, Monday through Friday