

Montgomery Ward®

Montgomery Ward®

*Durable
&
Reliable*

Cordless Reciprocating Saw & Worklight



Model: DMF-008C

Montgomery Ward Customer Service
1112 7th Avenue, Monroe, WI 53566
8:00 a.m. to Midnight, Monday through Friday

Wards.com 1-888-557-3848

Instruction Manual

Item No.: 743504

Wards.com 1-888-557-3848



Thank you for purchasing your Cordless Reciprocating Saw and Worklight by Montgomery Ward®. They will perform to the highest standard, time after time, with all the convenience and durability you rely on from Wards. We guarantee it!

Your reciprocating saw has the versatility to cut through drywall, wood or metal and conveniently comes with a blade for each type of job. Whether you're looking for a lost item or taking a walk in the woods, your handy worklight is there to lead the way.

Table of Contents



Important Safeguards.....	3-5
Parts & Features Reciprocating Saw.....	5
Reciprocating Saw Assembly	6
How to Use the Reciprocating Saw	6-7
Charging the Battery.....	8
Overload Protection.....	8
Parts & Features Worklight.....	9
How to Use the Worklight	9
Troubleshooting	10
Cleaning & Disposal	10
Specifications	11
Warranty & Return Information	12-13

PLEASE SAVE THESE INSTRUCTIONS

© 2016 Montgomery Ward, Inc. All rights reserved.

Important Safeguards

THIS MANUAL CONTAINS IMPORTANT INFORMATION REGARDING SAFETY, OPERATION, MAINTENANCE AND STORAGE OF THESE PRODUCTS. BEFORE USE, CAREFULLY READ AND UNDERSTAND ALL CAUTIONS, WARNINGS, INSTRUCTIONS AND PRODUCT LABELS. FAILURE TO DO SO COULD RESULT IN SERIOUS PERSONAL INJURY AND/OR PROPERTY DAMAGE.

 WARNING:	Indicates a potentially hazardous situation which, if not avoided, could result in death or serious injury.
 CAUTION:	Indicates a potentially hazardous situation which, if not avoided, may result in minor or moderate injury.
IMPORTANT:	Provides additional information that is useful for proper use and maintenance of this tool.

WORK AREA SAFETY:

1. Close supervision is necessary when any power tool is used near children. These tools are not suitable for use by children. NEVER leave equipment unattended when children are present.
2. Keep work area and surface clean and well lit.

PERSONAL SAFETY:

1. Stay alert and use common sense when operating power tools. NEVER use a power tool while tired or under the influence of medication, drugs or alcohol.
2. Wear personal protection equipment such as safety glasses, dust mask, nonskid safety shoes, hearing protection and gloves that are appropriate to the task.
3. Do NOT wear loose-fitting clothing or jewelry. Keep clothing, long hair and gloves away from moving parts.
4. Do NOT carry a power tool with your finger on the trigger.
5. Ensure safety lock, if available, is engaged when inserting the battery.
6. Do NOT overreach. Make sure your stance is steady and well balanced at all times. This will allow you to have more control in unexpected situations.

ELECTRICAL SAFETY:

1. Only use the battery and charger approved by the manufacturer. A charger suitable for one type of battery can constitute a fire hazard if used for another type of battery.
2. Do NOT expose tools to rain or other wet environments. Water inside a power tool increases the risk of electric shock.
3. Do NOT store rechargeable battery in sunlight or near metal objects such as paper clips, coins, keys, nails, screws or any other small objects that could bridge the gap between the battery terminals.
4. Do NOT use tool if the power switch does not properly work. Any tool that cannot be controlled with the power switch is dangerous and must be replaced.

CORDLESS POWER TOOL GENERAL SAFETY:

1. Power tool should be switched to OFF when installing battery to avoid equipment damage and personal injury.
2. Do NOT expose power tools to extreme temperatures or fire.
3. To protect against electrical shock, do not place or use power tool in water or other liquid.
4. Avoid contact with corroded or damaged batteries.
5. Do NOT operate any power tool that malfunctions or has been damaged in any manner. Call our toll-free customer service number for information regarding replacement or returning the product.
6. Do NOT use tool for anything other than its intended use.

RECIPROCATING SAW SAFETY:

WARNING:

- Use clamps or other practical ways to secure and support the workpiece to a stable platform. Holding the workpiece by hand or against your body is unstable and may lead to loss of control and personal injury.
- When using the reciprocating saw, always maintain a firm grip on the tool with both hands. NEVER put your hands or feet in the cutting area. Do NOT grasp the tool or place your hands too close to the blade. Keep your hands well away from the blade. NEVER reach underneath the tool while the blade is in motion.
- When sawing into walls or other places where there might be hidden electrical wires, cut off the power supply to any wiring circuits which may be hidden behind the wall. Grip only the handles of the reciprocating saw. NEVER grip any metal parts of the saw when cutting in areas where there might be live electrical wires.
- Do NOT use blunt or damaged saw blades. Bent saw blades can easily break or cause kickback.
- Make sure that the settings are correct and that the blade is securely fastened in the blade holder before beginning to saw.
- Start the saw and let it get up to speed before starting to cut.
- Do NOT operate reciprocating saw with the Allen key in the socket head.
- Do NOT use reciprocating saw near flammable liquids, gases or dust. Power tools generate sparks that can easily ignite dust or fumes.

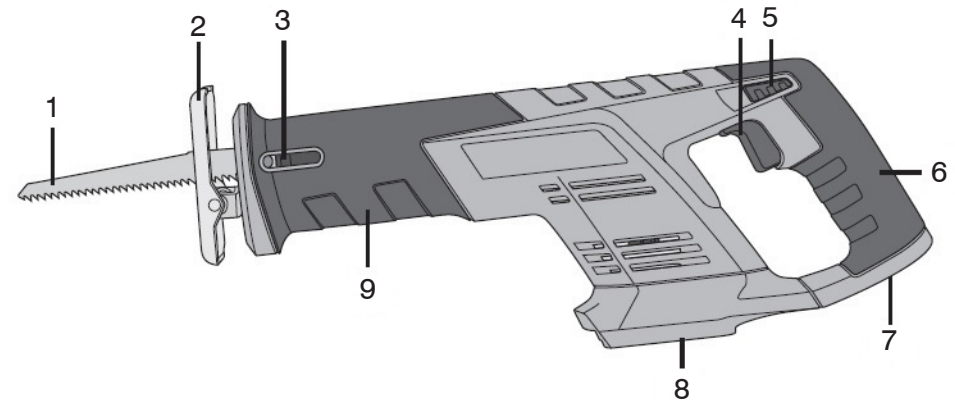
WORKLIGHT SAFETY:

WARNING:

1. Worklight is not waterproof. Do NOT use in areas of high humidity.
2. Do NOT use the worklight in environments containing flammable liquids or gases.
3. NEVER look directly into the beam and do not shine the light at another person's eyes.

IMPORTANT: Neither the reciprocating saw nor the worklight contain user serviceable parts. Do NOT try to repair either of them yourself. If problems occur, call our toll-free customer service number for information regarding replacement or returning the product.

Parts & Features Reciprocating Saw



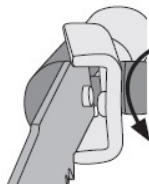
- | | |
|------------------------------------|-----------------------|
| 1. Cutting blade (1-wood; 1-steel) | 6. Rear handle |
| 2. Footplate | 7. Allen key holder |
| 3. Blade clamp | 8. Battery connection |
| 4. Variable speed power trigger | 9. Front handle |
| 5. Safety lock button | |

⚠ WARNING:

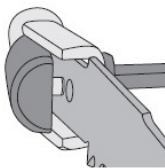
Always remove battery before inserting saw blade.

The saw blade can be fitted with the teeth along the bottom or top edge of the saw.

1. Remove the battery.
2. Fit Allen key into socket head screw in the blade clamp and turn key four revolutions counter-clockwise.



3. Remove the saw blade by unhooking it from the blade clamp guide pin.
4. Insert a new blade into the blade clamp making sure that the blade clamp guide pin passes through the hole in the end of the blade.



5. Using the Allen key, tighten the socket head screw on the blade clamp.
6. Replace the Allen key back into the holder on the rear handle.
7. Confirm that the blade is properly clamped before starting saw.



How to Use the Reciprocating Saw

Prior to Use

1. Confirm that the blade is properly clamped.
2. Confirm that the workpiece, especially small or lightweight ones, is securely anchored or clamped to prevent it from slipping.
3. Mark the cut line.
4. Adjust the footplate so that it rests against the surface of the workpiece.
5. Hold the saw in a firm grip at a comfortable working distance from the workpiece making sure that the blade is not touching anything when the saw is turned on.

Operating the Reciprocating Saw

1. Turn on the saw by holding in the safety lock button while simultaneously pressing the variable speed power trigger.
2. Once saw is energized, release your hold on the safety lock button.
3. Change the speed of the blade by changing the pressure on the power trigger.
4. Move the blade carefully towards the workpiece.

⚠ WARNING:

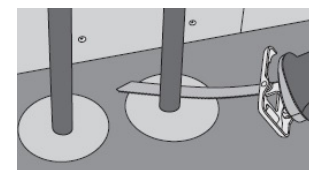
Do not feed the saw blade into the workpiece until it has fully come up to the set speed or serious injury may result.

5. Allow the blade to work at its own pace. Do NOT force blade into workpiece.
6. Release the power trigger to stop the saw.

Sawing Flush to a Surface

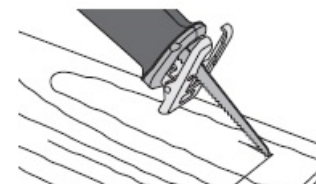
By using a flexible bi-metal saw blade you can saw right up to the edge of a surface. This is useful when sawing off pipes protruding from a wall, for example.

- Lay the side of the saw blade flat against the surface/wall and tilt the saw so that the side of the footplate rests against the surface/wall.
- Lay a thin piece of hard plastic between the blade and the surface to protect the surface.



Sawing Corners

1. Mark the cut line.
2. Line the tip of the blade along the cut line.
3. Rest the edge of the footplate on the workpiece and hold the saw almost parallel to the workpiece with the blade in the air.
4. Start the saw and let it come up to speed.
5. Slowly tilt the saw upwards so that the blade feeds into the marked cut line.
6. Continue to tilt the saw upwards until it is at right angles to the workpiece, cut until you reach the next corner.



Sawing Metal

Use a sharp blade specially designed for cutting metal. Use cutting oil, appropriate for the material being cut, for cooling and lubricating while cutting. Do NOT overload the saw – let it work at its own pace.

Charging the Battery

IMPORTANT: Batteries need to be fully charged before initial use.

Do NOT charge batteries in direct sunlight. Charge in temperatures between 41–104° F.

1. Remove battery from drill/worklight by pressing the battery release button and sliding it forward. If the battery feels overly warm, allow it to cool down before charging.
2. Connect the battery charger to an electrical socket. The green light will illuminate.
3. Insert the battery into the charger. While the battery is charging, the red light will blink and the green will stay steady. Once the battery is fully charged, both red and green lights will shine steadily.
4. To remove the battery from the charger, press the release button on the battery.

NOTE: If the red light on the charger blinks three times per second while the green light is steady, the battery needs to be replaced.

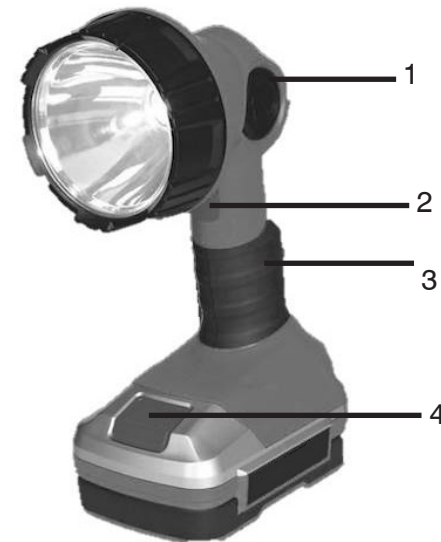
IMPORTANT: Batteries should be fully charged for long-term storage.

Overload Protection

The reciprocating saw and its battery have built-in safety features to prevent damage to the tool and battery during use.

- During short-term high-load situations, the overload protection will automatically turn off the saw. If this happens, release the trigger, wait a few seconds, ensure that there is no load and then restart the saw. For high-load situations that occur for an extended period of time, wait until the saw returns to normal operating temperature before trying to restart it. Adverse temperatures can occur in direct sunlight and should therefore be avoided.
- When the battery becomes discharged, the low-voltage protection turns off the saw automatically. Recharge the battery to continue use.

Parts & Features Worklight



1. Pivot connection
2. Power button
3. Grip handle
4. Battery release button

How to Use the Worklight

1. Insert rechargeable battery and push until it clicks in place.
2. Press the power button to turn the worklight on or off.
3. Pivot the worklight head up to 95°.
4. To remove the battery, press the battery release button.

Troubleshooting

Problem	Possible Cause	Remedy
The saw does not start.	Battery discharged.	Recharge the battery.
	Overload protection shut down the tool/battery.	Allow motor/battery to cool down then restart.
	Worn brushes.	Contact Customer Service.
	Faulty power trigger.	Contact Customer Service.
The saw is slow and/or shuts off.	Worn/damaged saw blade.	Replace the saw blade.
	Too much pressure applied.	Decrease applied pressure.
	Battery discharged.	Recharge the battery.
	Overload protection shut down the tool/battery.	Allow motor/battery to cool down then restart.
Sparks in the motor.	Faulty brushes.	Contact Customer Service.
	Windings short-circuited.	
	Dirty commutator.	
Worklight does not turn on.	Battery discharged.	Recharge the battery.

Specifications

Reciprocating Saw

Speed: 3,000 strokes per minute

Stroke Length: 7/8"

Sawing Capacity:

2-1/4" wood; 3/16" steel

Operating Time:

20–25 minutes without load

Blades: Qty. 1 Wood; Qty. 1 Metal

Blade Teeth per Inch: 7 Wood; 27 Metal

Battery:

18-volt Lithium-ion

Weight:

4.9 lbs. with battery

Worklight

Beam Type: Fixed

Lumens: 110–130

LED bulb: 3 W

Beam Angle: 120°

Aperture: 3 inches

Pivot: 95°

Battery:

18-volt Lithium-ion

Weight:

1.5 lbs. with battery

Cleaning & Disposal

IMPORTANT: Remove battery before cleaning.

Clean the power tools using a soft, dry cloth. If necessary, a damp cloth with mild detergent can be used on the reciprocating saw. Do NOT use solvents or abrasive cleansing agents. Remove debris from the ventilation openings in the saw to maintain proper airflow.



Power tools and batteries should not be disposed of with general household waste. Follow local recycling rules for proper disposal.

Returns

If any item, for any reason, does not meet your expectations, just return it to us. We'll gladly either:

- Refund your merchandise amount
- Credit your account
- Send a replacement

You may return any unused item in its original packaging within 60 days of its receipt for a full refund of the purchase price (excluding shipping and handling charges).

Please send returns to:

**Montgomery Ward, Inc.
Attn: Customer Returns
2000 Harrison Suite 100
Clinton, IA 52732-6676**

When returning an item:

- Use the original packaging and pack it securely.
- Please adequately insure your item in case you need to make a claim with the carrier you choose for returning your item.
- Include your order number and reason for return.
- We recommend keeping the receipt for 4 weeks.

Montgomery Ward®

Improving American Homes Since 1872



1 Year Limited Warranty

Montgomery Ward, Inc. warrants this product to be free from defects in material and workmanship for one year from provable date of purchase.

Within this warranty period, Montgomery Ward will repair or replace, at its option, defective parts of this product at no charge, provided the product is returned, freight prepaid with proof of purchase to Montgomery Ward. Allow 2–4 weeks for return shipping.

This warranty does not cover improper installation, misuse, abuse or neglect on part of the owner. Warranty is also invalid in any case that the product is taken apart or serviced by an unauthorized service station.

This warranty gives you specific legal rights and they may vary from state to state.

THE FOREGOING WARRANTIES ARE IN LIEU OF ALL OTHER WARRANTIES AND CONDITIONS, EXPRESS OR IMPLIED, INCLUDING BUT NOT LIMITED TO THOSE OF MERCHANTABILITY OR FITNESS FOR A PARTICULAR PURPOSE.

Montgomery Ward Customer Service
8:00 a.m. to Midnight CT, Monday through Friday

Wards.com 1-888-557-3848